



# GMT MONTHLY MEMBERSHIP PROGRESS REPORT

Results as of: 6/30/2020

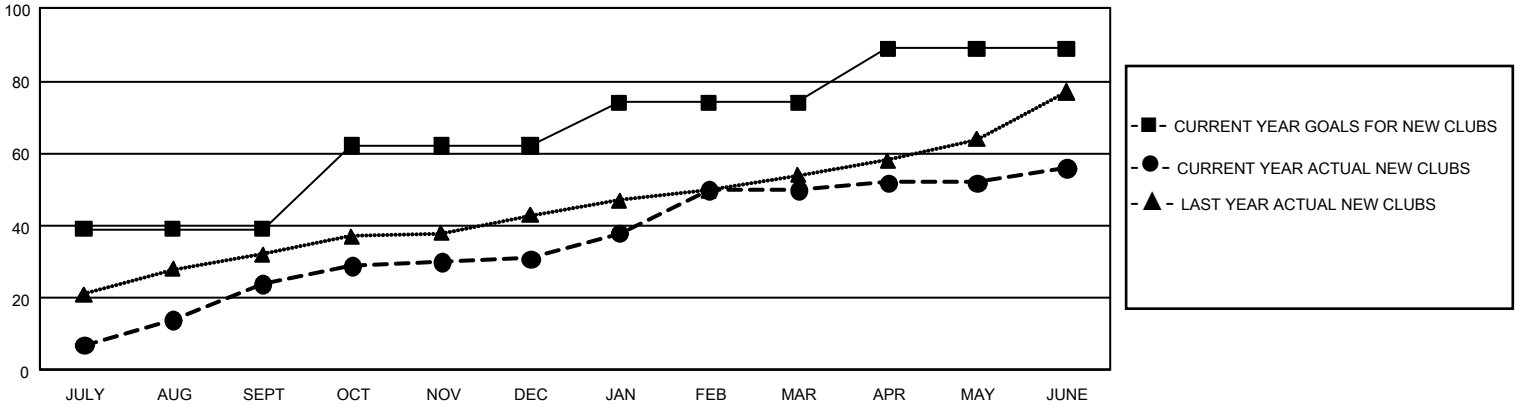
## GMT Constitutional Area 6, Group J

GMT: OPEN

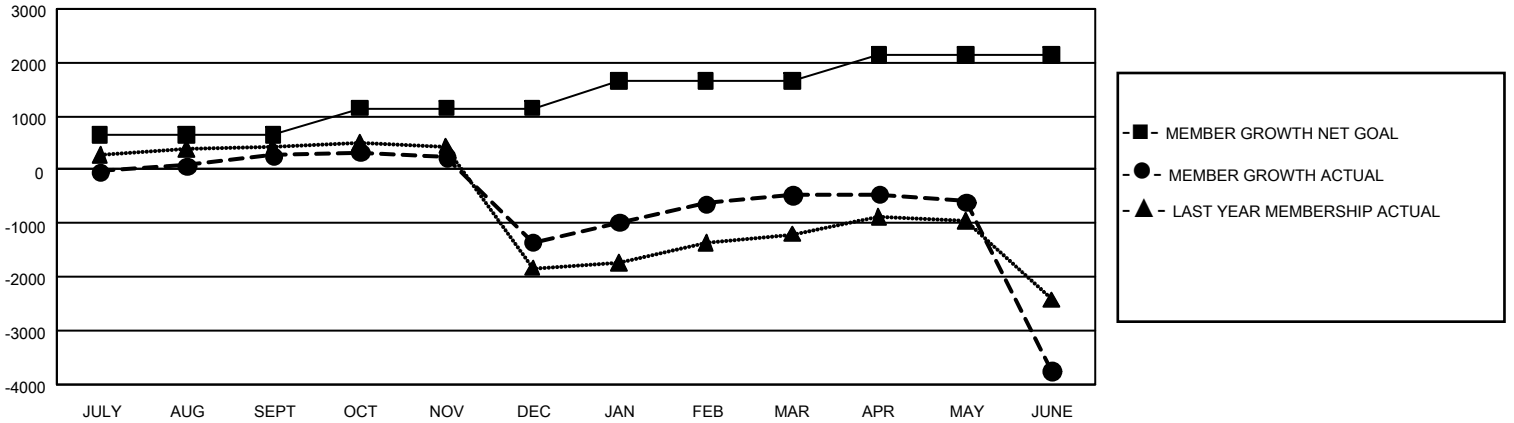
REPORT DOES NOT INCLUDE CLUBS IN UNDISTRICTED AREAS.

Clubs				Members			
RESULTS FOR 2019-2020				RESULTS FOR 2019-2020			
QUARTER	NEW CLUB GOAL	NEW CLUBS	DROPPED CLUBS	QUARTER	MEMBER GROWTH NET GOAL	MEMBER GROWTH ACTUAL	DROPPED MEMBERS ACTUAL (including transfers)
JULY/AUG/SEPT	117	24	3	JULY/AUG/SEPT	1,965	1,483	1,014
OCT/NOV/DEC	69	7	50	OCT/NOV/DEC	1,485	501	2,048
JAN/FEB/MAR	36	19	7	JAN/FEB/MAR	1,530	1,753	525
APR/MAY/JUNE	45	6	0	APR/MAY/JUNE	1,470	856	3,901

GOALS AND ACTUAL NEW CLUBS CUMULATIVE



GOALS AND ACTUAL MEMBERS CUMULATIVE



DROPPED CLUBS: 60	554 CLUBS OF 1,062 ADDED 1 OR MORE NEW MEMBERS	<u>GENDER DISTRIBUTION</u>	
<u>DROPPED MEMBERS</u>		MALE	21,031 (72.97%)
DECEASED	96	FEMALE	7,790 (27.03%)
CLUB CANCELLED	1,255	TOTAL FAMILY UNIT MEMBERS 14,495	
OTHER	6,134		
TOTAL	7,485		
<a href="#">CLICK HERE FOR CUMULATIVE MEMBERSHIP DATA</a>			